



beautiful
MINDS

specimen and user guide

Beautiful Minds

SCRIPT

To look as much realistic as possible, **Beautiful Minds Script** has lots of stylistic and contextual alternates as well as initial and end letters and swashes included.

As long as both Standard and Discretionary Ligatures along with Contextual Alternates features are activated in the OpenType panel of your application, letters will be replaced automatically while you are writing.

Fonts turn words into stories

Sarah Hyndman

Each lowercase letter has up to 10 alternates. Additionally, the font has Capital Alternates, Small Capitals, nominators/denominators and fractions and, of course, a full set of punctuation and symbols. The script font reaches a total of more 1300 glyphs and supports most of the Western, Central and South Eastern Languages including: Breton, Catalan, Czech, Danish, Estonian, English, Finnish, French, German, Hungarian, Icelandic, Italian, Latvian, Lithuanian, Norwegian, Polish, Portuguese, Romanian, Scottish Gaelic, Slovak, Slovenian, Spanish, Swedish, Turkish, Welsh.

Pójdźże, kiń tę chmurność w głąb flaszki!

Polish pangram: Go, cast this melancholy into the depth of a bottle!

We do suggest to use professional OpenType-aware applications that have OpenType and Glyphs panels, like Adobe Photoshop, Adobe InDesign or Adobe Illustrator*. You can still use Beautiful Minds fonts in Silhouette and similar applications (that has no OpenType support yet) but may need a help of a font management software such as Character Map (Windows) or FontBook (Mac). To select the glyphs, you can also use a third party applications such as PopChar.

STUDIO EIGHT

UPPERCASE

STUDIO EIGHT

SMALL CAPITALS

* Make sure to switch on Standard and Discretionary Ligatures along with Contextual Alternates in the OpenType panel of the application you are using.

BEAUTIFUL MINDS SCRIPT CHARACTERS

BASIC CHARACTER SET

A B C D E F G H I J K L M N O P

Q R S T U V W X Y Z

a b c d e f g h i j k l m n o p q r s t u v w x y z

1 2 3 4 5 6 7 8 9 0

. , ; : ! ; ? ; ° * # ^ ° { } [] - _ , " “ ” ‘ ’ « » < > ”

' € \$ £ ¥ + - × ÷ = > < % ‰ @ & © ® ™ ° | ^

CAPITAL ALTERNATES (TALLER THAN BASIC SET)

A B C D E F G H I J K L M N O P

Q R S T U V W X Y Z

BEAUTIFUL MINDS SCRIPT CHARACTERS

LIGATURES

al all at bb bl cc d dl ee el et ett ff fl ft hl
ht il im in iti ti kl kt ll lle lt ml nl nt oi ol
oll om on ot ou ov ow pl pp pt rl sl ss st th
ti tl tt ul ut ve

ALTERNATE LIGATURES

al bb bb cl dl el hl il iti iti ll ll ll ll ll ll
lt lt ml nl ol oll oo pl pp rl sl ss th ti tl
tt tt tt tt ul

BEAUTIFUL MINDS SCRIPT CHARACTERS

STYLE 01

a b c d e i k l m n o p r s t u v

STYLE 02

a d i l m n o r s t u v w

STYLE 03

b d g h j k l o p q s t v w y

STYLE 04 (USED TO CONNECT WITH TALL LETTERS SUCH AS b, h, l, f, t, k AND THEIR ALTERNATES)

a b c d e f w i k l m n o p r s t u v

STYLE 05

f l r s t v

STYLE 06

l r t

STYLE 07

g h j k s t y

STYLE 08

s t

BEAUTIFUL MIND SCRIPT EXAMPLES OF USE

DEFAULT

letterpress

LIGATURES ON

letterpress

LIGATURES AND STYLISTIC
ALTERNATES ON

letterpress

Beautiful Minds

SERIF

Beautiful Minds Serif is a high-contrast typeface with thin, pointy, bracketed serifs, and ball terminals. It is a family of 5 fashionable fonts that will enhance any project that requires a touch of elegance and class. It contains of 2 weights with corresponding true italics and all-caps Stencil font.

R g h

Serif One and One Italic 12pt
designed to be used in large size

Luxury
Luxury

R g h

Serif Two and Two Italic 12pt
designed to be readable in small sizes

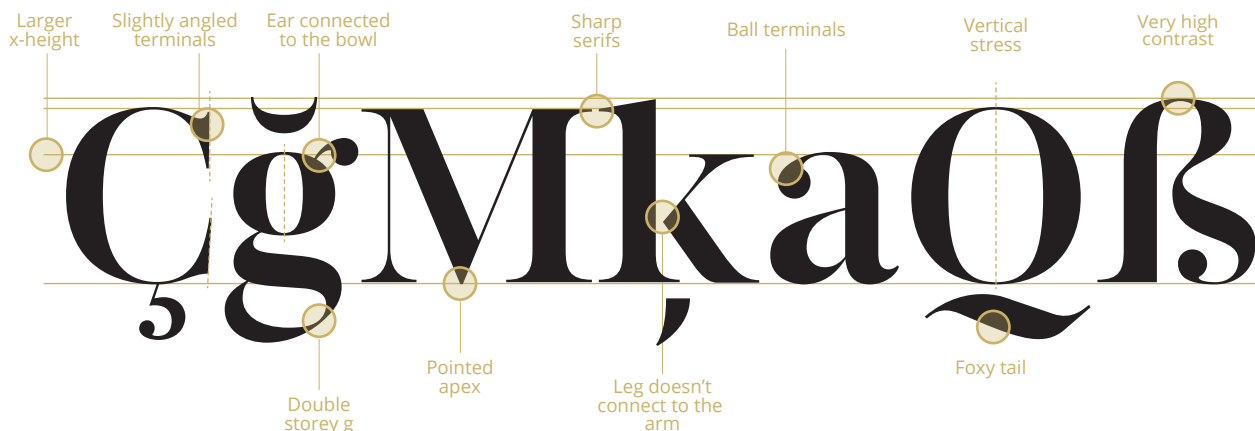
Luxury is the triumph of
appearance over substance.
*Luxury is the triumph of
appearance over substance.*

R G H

Serif Stencil 40pt
designed to be used in headlines

CHIC

BEAUTIFUL MINDS SERIF FONTS ANATOMY



REGULAR LOWERCASE

abcdefghijklmnopqrstuvwxyz

ITALIC LOWERCASE

abcdefghijklmnopqrstuvwxyz

OLD STYLE FIGURES

013456789

BEAUTIFUL MINDS SERIF FONTS SPECIMEN

Serif Two 36pt

MAKE THE PAST GO BANG

Serif One 49pt

UNIQUE TEACHERS

Serif One Italic 50pt

Grain Silo Contacts

Serif Two Italic 22pt

Illustrated technological manual of secrets

Serif Two 15pt

BOLOGNESE WITH BRIQUETTES SOAKED IN PLUM BRANDY

Serif Two Italic 32pt

FARFALLE'S 53 ALARM HEAT

Serif Stencil 120pt

FUSILLI

Serif Two 25pt

Straining noodles with a fibanachi lid

Serif One Italic 73pt

DEKALITRES

Serif Two 50pt

Neðanmálsgreinar

Serif One 64pt

Gleichmäßigen

BEAUTIFUL MINDS DESIGN EXTRAS



A



B



C



D



E



F



G



H



I



J



K



L



M



N



O



P



Q



R



S



T



U



V



W



X



Y



Z

BEAUTIFUL MINDS DESIGN EXTRAS



a



b



c d



e



f



g



h



i



j



k



l



m



n



o



p



q



r



s



t



u



v Use as a steam with roses



w



x



y



z

BEAUTIFUL MIND DESIGN EXTRAS

